

autop Major 430 W



OPERATIVE RANGE:

Check-in, diagnostics and repair



PARTICULAR FEATURES:

4-post electro- hydraulic lift with 4 t capacity

APPLICATION:

The Major 430W lifts are especially suitable for wheel alignment, service and inspection, repair of brakes, wheels, exhaust system, shock absorbers, transmission and differential.

This wheel alignment lift fulfils the special requirements of the leading car manufacturers with regard to maximum permissible difference in platform height during wheel alignment (+/-0.5 mm right/left and +/- 1 mm front/back/diagonally). The lift also fulfils the demands regarding stiffness, dimensions and the min./max. lifting height.

The platforms are equipped with fixed as well as with movable cover plates for turntables (not included in the delivery).

Major 430W is delivered as standard with 900 mm ramps. As optional extras we offer 1600 mm ramps.

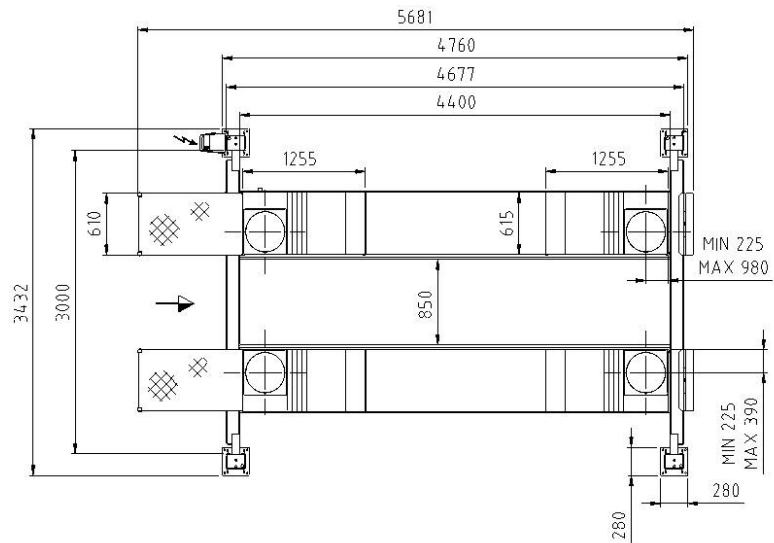




autop Major 430 W

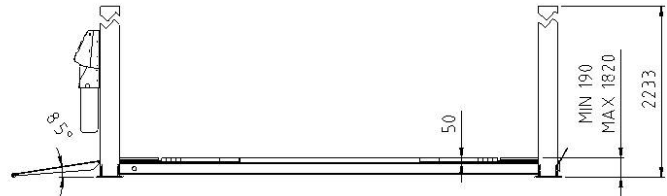
TECHNICAL DATA

Capacity:	4000 kg
Lifting height:	1820 mm
Min. height:	190 mm
Lifting/lowering time:	ca. 28 Sek.
Voltage:	230/400V/50Hz
Power unit:	3.0 kW
Min./max. pressure:	5.5 – 10.0 bar



COMPONENTS:

- Electro-hydraulic transmission with wire ropes
- Safety systems:
 - o Excentric brake system
 - o Obstruction system
 - o Alarm signal
- Push-button control unit
- Cylinder with hard-chrome plated and teflon coated piston, integrated in the platform
- Suitable for wheel alignment because platforms and traverses can be perfectly leveled.
- Spares for 4 turntables in the platforms



No liability accepted for specifications that are subject to alteration - validity 03/2011

OPTIONAL:

- Extended drive-on ramps
- Drive-through ramp
- Illumination kit
- Jacking beam Micro 20
- Jacking beam Micro 26
- Further accessories on request

The data and pictures in this product information are not binding and are only giving an approximate description. Moreover we reserve the right of differences between the goods delivered and the data and pictures given here (i.e. technical data, equipment, material and optical appearance) so far as the differences are reasonable for the customer and a possible reduction in value or utility value of the goods delivered is not considerable

MOREOVER:

Our expert consultants would appreciate to help you with the planning of a new garage or the modernization of an existing one.

STANDARD COLOUR:

Posts RAL 9002 white
Platforms RAL 7016 grey anthracite

We offer to work out a workshop concept including an equipment proposal.
Please do not hesitate to contact us.

