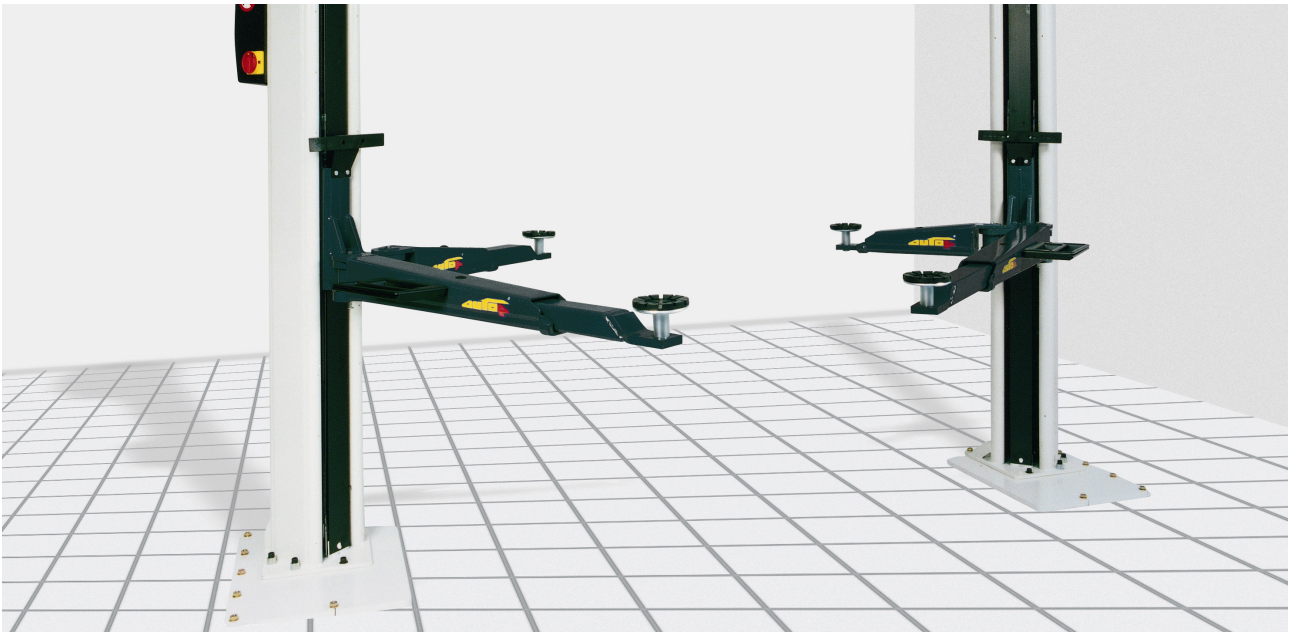


autop Maestro 2.35



OPERATIVE RANGE:

Repair and maintenance



PARTICULAR FEATURES:

2 motors, 2-post electro-mechanical lift without base frame

APPLICATION:

The autop Maestro 2.35 is a 2-post electro-mechanical lift for repair and maintenance, with a lifting capacity of 3.5 t.

Maestro 2.35 has been developed especially to offer high flexibility and optimized lifting capacity for work-shops servicing both small cars, transporters and pick-up trucks.

Maestro 2.35 is available with either flex pads or our new combiflex-08 pads.

We offer a large program of both U and flex pads for all models.

F - arms: H= 85-115 mm

CF - arms H = 95-250 mm

6 large guiding wheels





autop Maestro 2.35

TECHNICAL DATA:

Lifting capacity: 3500 kg
 Lifting/Lowering time: ca.35 Sek.
 Voltage: 230/400V/50Hz
 Motors: 2 x 2,8 kW

	A	B	C	D	E	F	G	H	I	J	K	L	
F	3410	2580	3120	3320	4050 - 4350	2713	1900	2020	2290	550	465	Ø120	
CF-08	3410	2580	3120	3320	4050 - 4350	2713	1900	2030	2290	550	465	Ø120	
	M	N	O	P	Q	R	S	T	U	V	W	X	Y
F	600	1220	900	1425	200	115	85			95	100	190	260
CF-08	800	1425	920	1440	200	250	95			92	100	190	

COMPONENTS:

- Spindle, cold-rolled, centered, long working life
- Lifting mechanism: 6 large guiding wheels in lubrication-free needle bearings
- Nut set: highest quality due to special synthetic alloy
- Safety systems:
 - Nut breakage system
 - Internal arm locking device that automatically releases in bottom position
 - Control unit with dead-man controls and separate main switch
- Swivel arms: can be parallel parked, especially for vehicles with a short wheel base
- Asymmetric design allows car doors to be opened freely

OPTIONAL:

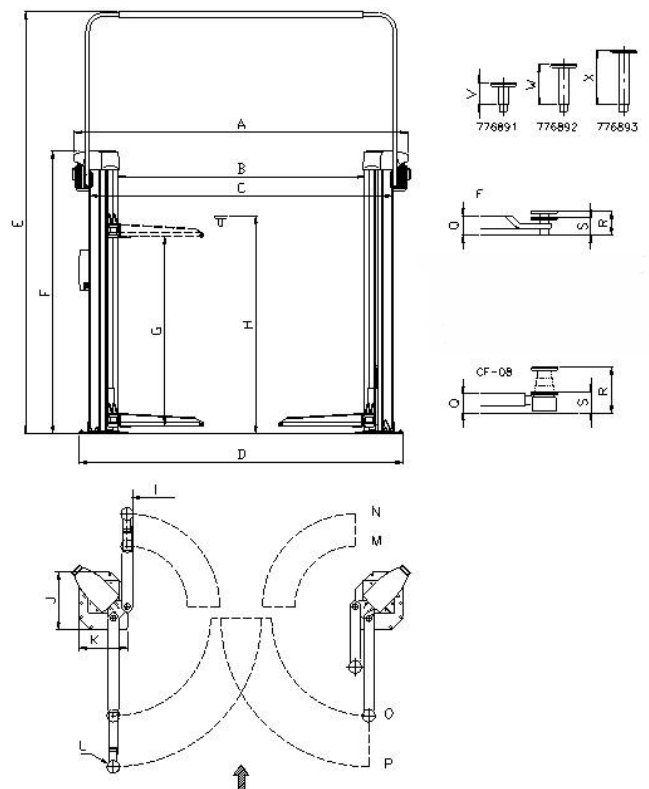
- A wide range of pads is available
- Control unit can be delivered in 3 different versions
- Door stops and collapsible wheel holders

STANDARD COLOURS:

Posts RAL 9002 white
 Arms RAL 7016 grey anthracite

MOREOVER:

Our expert consultants would appreciate to help you with the planning of a new garage or the modernization of an existing one. We offer to work out a workshop concept including an equipment proposal. Please do not hesitate to contact us.



No liability accepted for specifications that are subject to alteration - validity 08/2011

The data and pictures in this product information are not binding and are only giving an approximate description. Moreover we reserve the right of differences between the goods delivered and the data and pictures given here (i.e. technical data, equipment, material and optical appearance) so far as the differences are reasonable for the customer and a possible reduction in value or utility value of the goods delivered is not considerable

