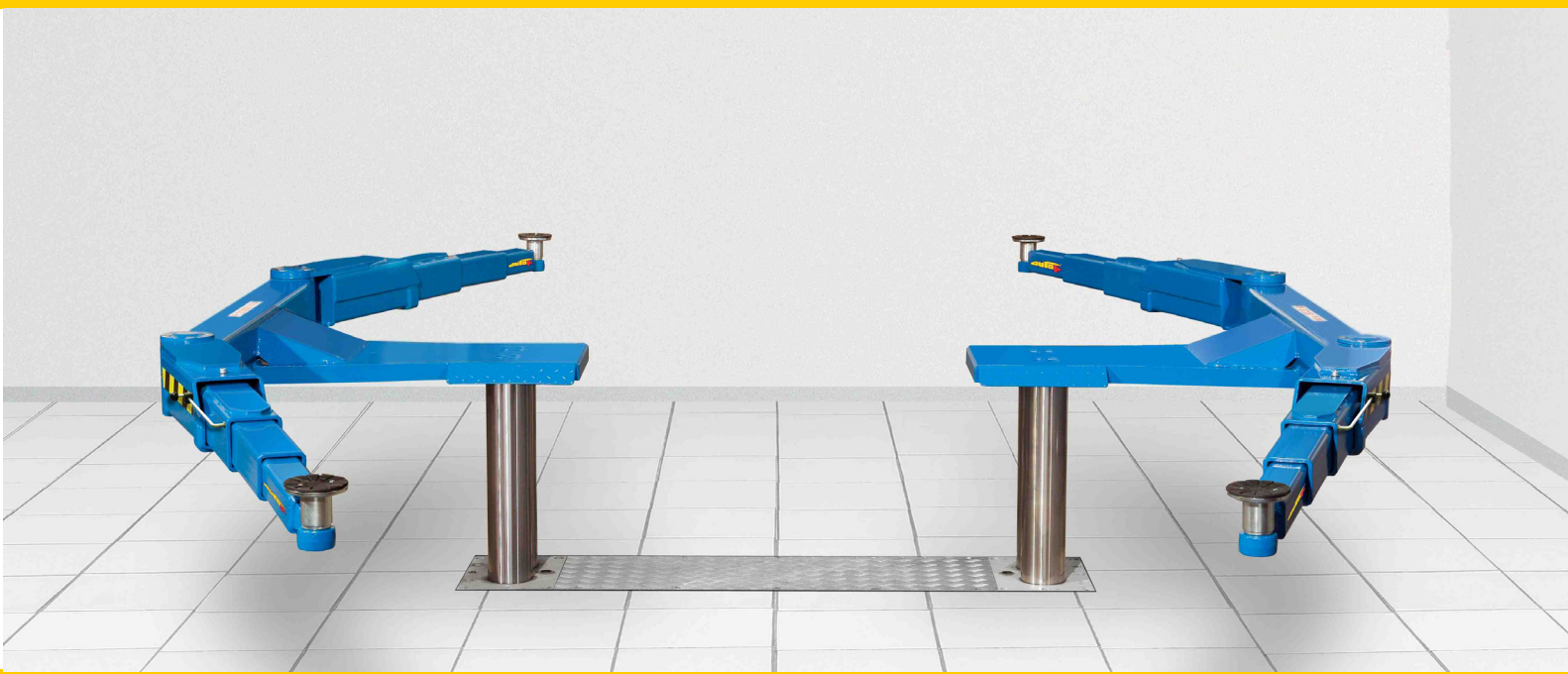


autop Biglift 4.60 Saaa 145



OPERATIVE RANGE:

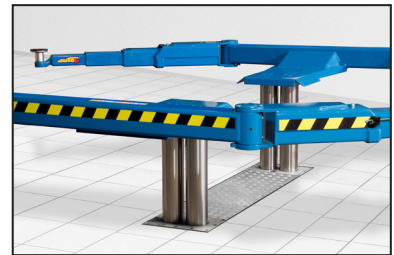
Repair and maintenance



PARTICULAR FEATURES:

This new construction points out the following advantages:

- the double cylinders give a perfect stability
- safe lifting even in case of unfavourable load distribution
- low installation costs
- proven and extremely resistant chrome plated lifting cylinders
- space saving construction
- can be fitted into existing Cargolift cassettes



APPLICATION:

The Biglift 4.60 Saaa 145 is a transporter lift, which can lift up a very large range of vehicles. Small transporters and city trucks can be lifted up without any problems. Due to the low drive-over height you can use this lift also for private cars and off-landers.

The autop Biglift is equipped with triple telescopic arms and appropriate for all kinds of repairs and maintenance. The arms can be moved more than 90°, this assures an easy access of the lift.





autop Biglift 4.60 Saaa 145

TECHNICAL DATA:

Lifting capacity:	6000	kg
Piston distance:	1485/145	mm
Stroke length (old cas.):	1740	mm
Stroke length (new cas.)	1850	mm
Lifting height (depending on pads/serial equipment)		
Old cassette:	1845-1885	mm
New cassette:	1955-1995	mm
Lifting/lowering time:	approx 45	sec.
Cylinder diameter:	4 x 123	mm
Foundation depth:	2,665	mm
Voltage:	230/400	V
	50	Hz
	16	A
Pump unit:	3.0	kW

COMPONENTS:

- Two pairs of hard-chromed inversed cylinders running on teflon sliding rings.
- Steel bearings in a sturdy welded construction, galvanized and painted; wear resistant bearing.
- SPS-control unit.
- Flexible traverse cross arm, effective as synchronisation/safety device as well as torsional lock.
- Pump unit with suboil motor.
- Push button control unit for lifting/lowering with alarm signal, lockable main switch and integrated pneumatic emergency drain.
- Installation in a waterproof cassette, on request galvanized and/or self-carrying.
- Two on-floor swivel arm bridges:
 - - triple telescopic swivel arms
 - - height adjustable lifting pads
 - - integrated, automatic arm locking system
 - - without feet protectors

OPTIONS:

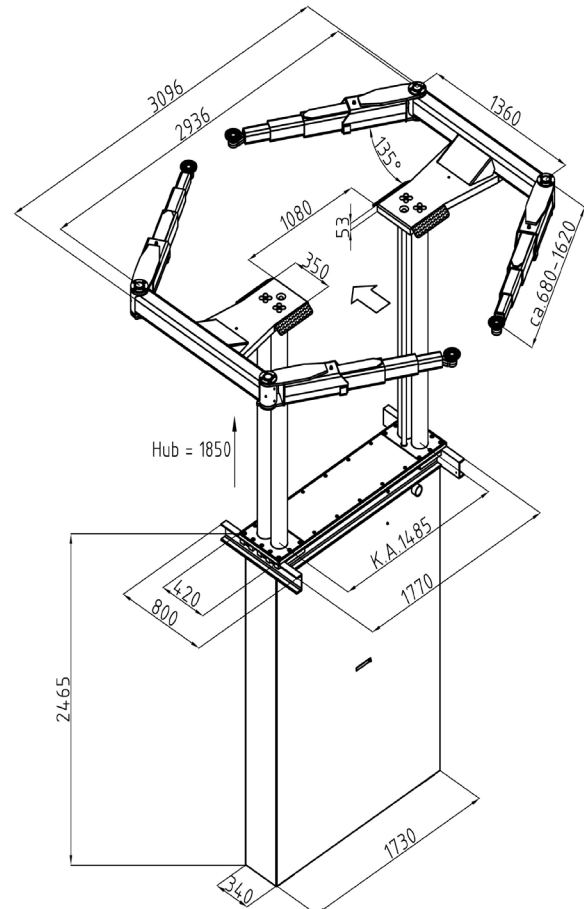
Individual lifting pads for various vehicle types are available

STANDARD PAINT:

RAL 5019 blue

alternatively

RAL 7016 grey anthracite



MOREOVER:

Our expert consultants would appreciate to help you with the planning of a new garage or the modernization of an existing one.

We offer to work out a workshop concept including an equipment proposal. Please do not hesitate to contact us.

No liability accepted for specifications that are subject to alteration – validity 03/11

The data and pictures in this product information are not binding and are only giving an approximate description. Moreover we reserve the right of differences between the goods delivered and the data and pictures given here (i.e. technical data, equipment, material and optical appearance) so far as the differences are reasonable for the customer and a possible reduction in value or utility value of the goods delivered is not considerable.



autop Maschinenbau GmbH * Sandkampstraße 90 * D-48432 Rheine

Tel. +49 (0)5971/8602-02 * Fax +49 (0)5971/860225 * E-Mail: mail@autop.de * www.autop.de